

Autumn
2016

THE DYSLEXIA FACTOR



W a l t h a m F o r e s t

Dyslexia Association

Opening doors for dyslexics since 1989

Registered Charity: 802993



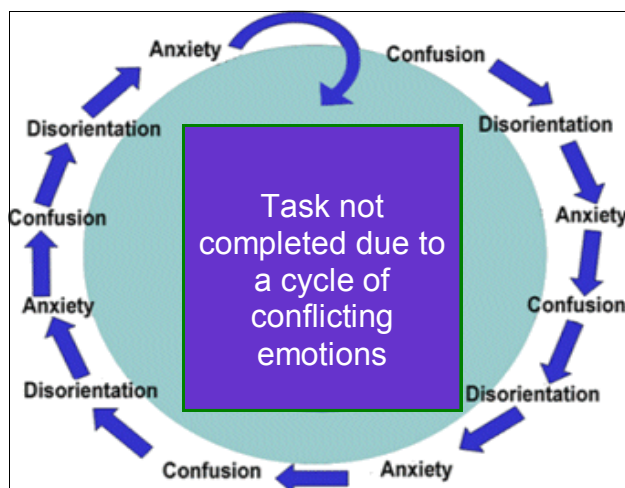
Welcome to the **WFDA Autumn 2016 Newsletter**. My year as WFDA Chair has been very eventful, fun and challenging with many highlights. I'll be sad to step down in November at our AGM but due to other commitments my tenure was for one year. However I'll remain on the Trustee board and I look forward to working with our new Chair. **Lois Hood, Chair of WFDA**

Strategies for getting things done

When you need to get something done, do the feelings of being overwhelmed, confused and distracted sound familiar? **People with dyslexia can delay tasks that involve literacy skills as they get caught up in a conflicting cycle of emotions.**

The consequence of putting off these tasks can be frustrating due to the amount of time wasted as well as psychological and practical repercussions resulting from failing to get things done. In turn this can lead to a person with dyslexia arguably wrongly, thinking of themselves lazy.

Read the new Help Sheet No 13 on our website wfda.org.uk for ways to cope.



Winston Churchill on new £5 note

In September 2016 the Bank of England issued a new £5 note with the image of British Prime Minister, **Winston Churchill**. It's widely believed that Churchill had dyslexia. The following statements are attributed to him and hopefully will inspire and be something you can relate to.

'I was, on the whole, considerably discouraged by my school days. It was not pleasant to feel oneself so completely outclassed and left behind at the beginning of the race.'

'Difficulties mastered are opportunities won.'

'A pessimist sees the difficulty in every opportunity; an optimist sees the opportunity in every difficulty.'

'Attitude is a little thing that makes a big difference.'

'I never worry about action, but only inaction.'

'Continuous effort, not strength or intelligence is the key to unlocking our potential.'

We're here to help...



Student artwork on display during Cultural Week.

Summer Transition Club 2016

Massive thank you to all the team for all their hard work in making the week run smoothly and of course thank you to **Forest School** for the 8th year running allowing us to use their fantastic premises.

Also thank you to the **Mayor of Waltham Forest Cllr Peter Herrington** who attended our Presentation ceremony

During Highams Park Cultural Week in September, artwork produced at the club was kindly displayed at **Heales Cycles**

WFDA has already secured **£3000** funding to run next year's club (**24 - 28 July 2017**) from the **Angle House Foundation**.

If your child has dyslexia/dyspraxia and is entering secondary school in September 2017 register them on to the club

Visit wfda.org.uk for more information.

Funding from Sport Relief

WFDA has been awarded **£20,000** which will help address the shortfall of **£35,000** needed to provide our after school support classes held at **George Mitchell School**, Leyton. With this much needed funding we're able to continue to run this valuable service. See **page 4** for more information.

AGM

ANNUAL GENERAL MEETING

Free WFDA AGM
Thursday 17 November
at The Salvation
Army, 434 Forest
Road, E17 4PY.
7.00-9.30pm

Our AGM gives you a chance to get involved; influence decisions being made concerning the future of WFDA as well as an opportunity for you to find out more about us.

There'll be the annual award ceremony.

Jack Petchey Award **David Chai**

Volunteer of the Year **Su Manning**

Lifetime Volunteer **Margaret Heath**

8.15 Guest Speaker **Adam Hyland**

Challenging the perceptions of 'disability' and an insight into enabling technologies".

Adam is a passionate and inspirational advocacy campaigner for **Diversity and Ability**, a social enterprise to support people with disabilities including dyslexia in education and the work place.



(l to r) Representative from JB Riney, Helen Bigham, Cllr Chris Robbins, Leader of LBWF

Congratulations!

At the **2016 Love Your Borough Awards**, WFDA Charity Manager, **Helen Bigham** was presented with the **Leader of the London Borough of Waltham Council's Individual Award**. Thank you **Cllr Chris Robbins** and **LBWF** for the recognition and support you've shown WFDA over the years.



The London
Community
Foundation



Affiliated to the:



Get involved with WFDA



More about us...

Su Manning is one of our two volunteer help liners, mainstay of the adult group and Next Step programme. Also she

is a helper at the Summer Transition Club. Su is a retired trade unionist, social worker and long term volunteer including the Samaritans.

Why did you get involved with WFDA? *My dyslexia was only diagnosed when I was in my 50's and following that I could see traits of mine in my grand-daughter and suggested she got screened by WFDA.*

Share a WFDA highlight: *On the helpline I signposted a man to our monthly adult group. Meeting him face to face there, listening to his story I was able to offer him support. A year on he contacted me to thank me and tell me how he'd turned his life around from a very real brink of despair.*

How do you like to relax?: *Walking my dogs and listening to music preferably at the same time!*

What's your rule of life?: *Never give up, you don't know what you can do until you try!*



Trustee Update

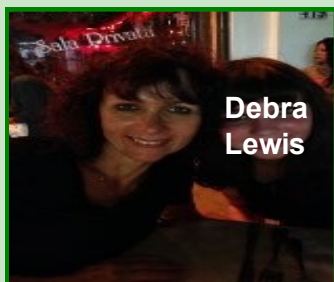
Sadly Margaret Heath (Vice Chair), Ranjan San, Alicia Browne and Janice Serrant have all recently stepped down from the Board, thank you to all of their support. Also, at the November AGM our Chair of Trustees, **Lois Hood** will be resigning; fortunately Lois will remain as a trustee.

WFDA is urgently seeking to fulfil this vital role. The Chair will work closely with the Board of Trustees and the Charity Manager to steer the charity through the next stage of delivering our strategic objectives. The successful appointee will be joining at an interesting and exciting juncture in the history of dyslexia and WFDA as a whole. **Please visit www.wfda.org.uk for more information.**

Working in Education

Recently WFDA ran dyslexia training course at **Newport school** and during **Dyslexia Awareness Week** (3—9 October) WFDA visited **Emmanuel Community School**.

Team update: Welcome to **Sheena Penfold, Kathy Payne** and **Debra Lewis** who in September joined the tutor team for our Tuesday after school support classes at George Mitchell Through School. They've already shown real commitment to WFDA students.



Debra
Lewis



Kathy
Payne



Sheena
Penfold

Classes General Information



Congratulations to all the Class team and Trustees for achieving their **NSPCC Child Protection certificates**. Safeguarding the people we work to support is important to everyone at WFDA.



Thank you to our funder **BBC Children In Need** who invited 8 young WFDA ambassadors to

be guests on the Hyde Park to Brighton Vintage Car Rally on 6 November. Drivers for the day are **Alex Jones & Chris Evans!**

New Class Monitoring Procedures

Thank you to class co-ordinator **Angela Brockway**, tutors **Michelle Rock & Carol Newnham** who together have devised and overseen the launch of a simplified and uniformed literacy monitoring procedure. This new approach will ensure that WFDA is able to have consistent measurable outcomes to show our funders and will support learning outside the WFDA classes.



Class Fundraising

On 6 December at the classes please support our **cake and lucky dip stall**. All money raised will be used for resources for the students. We welcome any donations and volunteers will be required to man the stall on the night. Contact **Angela**, Class Co-ordinator for more details.

Autumn Term 2016

Tuesday 13 September - 18 October

(25 October no class half term)

Tuesday 1 November – 6 December

**WFDA Annual General Meeting
Thursday 17 November 7.00pm**

Spring Term 2017

Tuesday 10 January - 7 February

(No class Tuesday 14 February H/T)

**Tuesday 24 January 5.00/6.00pm
Free Exam Support workshop**

Class payment options

WFDA accepts **cash/cheque/postal orders** to be made payable to WFDA.

BACS (5.00Sort Code 405240, A/N 00011569). **PayPal** to the Waltham Forest Dyslexia a/c. To pay by PayPal you don't need a PayPal account just your debit or credit card.

WFDA has charitable status on PayPal and we have to include an extra 20p + 1.4% on your fee.

For reference always quote your child's name. Don't pay fees until you're in receipt of a WFDA invoice.

Class details: Small, individualised literacy, numeracy, handwriting, study/ homework skills and touch- typing classes held on Tuesday evenings (term time only) at George Mitchell Secondary School, Farmer Road, Leyton, E10 5DN.

Literacy/Numeracy/Handwriting: 50 minute class from 4.00pm onwards (£14.00 per class) **Touch typing:** 50 minute class at 5.00pm or 6.00pm (£6.00 per class).

Let Angela Brockway, Class Co-ordinator know ASAP by text or email if your child is unable to attend their class. 07852 232509/e-mail wfdaco-ordinator@outlook.com. Office hours: Tues./Wed./Thursday (term time) 10.00-3.00pm.