

Summer 2015

# THE DYSLEXIA FACTOR



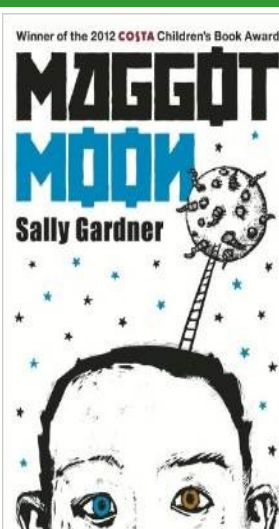
W a l t h a m F o r e s t  
**Dyslexia Association**  
Opening doors for dyslexics since 1989

Registered Charity: 802993



To run our services **WFDA** needs to raise money through making funding bids. To do this, we need to show that people need and want what we do. To support our case we provide facts and figures as well as dyslexia stories and quotes which we get from you filling in our monitoring forms. Thank you for playing a part in helping us raise money to continue to run our many activities.

**Adele Bird, Chair of WFDA**



**Sally Gardner is a successful children's writer and illustrator and has won the Costa Children's Book Award and the Carnegie Medal for Maggot Moon.**

*'I'd been classified as 'unteachable' but at 14, when everyone had given up hope, I learned to read. The first book I read was Wuthering Heights, and after that no one could stop me.'*

**Dyslexia is not a disability- it's a gift.** It means that I, and many other dyslexic thinkers can portray the world through images because we think in images. I can build worlds, freeze the frame, walk around and touch. I can read people's faces, drawings, buildings, landscapes and all things in the visual world more quickly than many of my non-dyslexic friends. I paint with words; they are my colours.

Non-dyslexic people often challenge my dyslexia- they don't believe I write my books or they think I have a ghost writer. Many of them have been made to think there's no point in trying to be a writer. **The key is not to listen to what they are told'.**

Excerpt from 'The Guardian' 24.06.13



## Plans to improve the Initial Teacher Training (ITT) System in England

The Government has announced that following the publication of a review by **Sir Andrew Carter** on the quality and effectiveness of ITT courses in England improvements have been identified.

An independent expert group led by **Stephen Munday CBE, Chief Executive of Comberton Academy Trust** have recognised the importance of training teachers to be able to work with pupils with Special Educational Needs and Disabilities (SEND) such as dyslexia. This positive news will benefit all pupils; as having a better awareness of dyslexia will help ensure literacy standards are raised for all students.

**Dyslexia Action** stated that:

*'We hope we can be confident that this expert advisory group will ensure this fundamental training is finally weaved into ITT so all teachers know how to recognise all SEND including special learning difficulties such as dyslexia and have an idea of how to best support these children'.*

## We're here to help...



The  
GOLDSMITHS'  
Company

### Take the 'Next Step'

The **Goldsmiths' Company** has funded us **£3000** to run our **'Next Step'** course. If you're an adult with dyslexia thinking about going back into education or employment learn different ways to cope with your dyslexia. The October classes are fully booked but spaces are still available for the 5 week programme running in January on Thursday evenings. To book your free place contact **Helen Bigham** on 07702 601897 or email [Helen@wfda.org.uk](mailto:Helen@wfda.org.uk).\*

### DM Thomas Foundation for Young People (formerly Hilton in the Community Foundation).

The Foundation has kindly agreed to fund our classes **£9980** for a further year!

They were influenced to make this generous decision by reading the feedback in our **Annual Class Report** - thank you to every one that completed the evaluation forms.



Waltham Forest  
**SENDIASS**  
Special Educational Needs Disability  
Information Advice and Support Service

### Free Working with schools Workshop

WF SENDIASS (formerly Parent Partnership) ran two free workshops for parent/carers at our classes.

Visit our website [wfda.org.uk](http://wfda.org.uk) for more info. on Glossary of SEN jargon, SEN FAQs, SEND Guide for Parent and Carers and SEND Code of Practice.

### BBC Children In Need Class Visit

BBC CiN came to classes to learn about WFDA and the families we work with. It gave them an opportunity to meet with the families that their fundraising supports. They had the chance to try and identify individual stories that might bring projects to life and inspire members of the public to donate to CiN.

Thank you to everyone that shared their thoughts and experiences with them.



### Adults with Dyslexia Meet-up

On the last Tuesday of the month (exc. August) from 6.30 - 8.30pm at The Mill, 7 - 11 Coppermill Lane, Walthamstow, E17 7HA (by St James Street St.). **Guest speakers.**

Feel welcome to drop into our **free** group, share your experiences and learn different ways to cope with having dyslexia.



### Free Summer Transition Club for Year 6 students

**Monday 27 July to Friday 31 July**

The **Big Lottery for England** has provided us with a grant to run our club at **Forest School** for Year 6 students with dyslexia and dyspraxia moving up to Year 7 in September. Lots to do: sport, swimming, art, woodwork, cookery, dance and dyslexia coping tips.

**To book a place contact Helen Bigham\*.**



Deutsche Bank



Affiliated to the

**British Dyslexia** a  
Association



Waltham Forest  
Winner of London Borough  
of Waltham Forest  
Civic Award 2014

## Get involved with WFDA



Mark Parr

### More about us...

Mark Parr is the lead volunteer at our recently launched monthly **Adults with Dyslexia Meet-up**.

**Why did you get involved with WFDA?**

*I have dyslexia and attend a central London Dyslexia Adult group and through them was put in contact with Helen (WFDA Charity Manager) who was trying to set up a local group. I enjoy working with WFDA and particularly look forward to meeting all the remarkable people who come to our group each month.*

### Share a volunteer highlight.

*We held an open forum and I interviewed **Aga**, a talented and inspirational dyslexic who has accomplished so much including being a WFDA tutor. The group held an enthusiastic and lively discussion and I was pleased to be part of watching people take ownership of their group.*

### How do you like to relax?

*I'm a bookworm that enjoys exploring bookshops, playing tabletop games and I love music currently I'm trying to learn to play the ukulele.*

**What's your rule of life?** *Better to travel in hope, the views are nicer.*

### Working with Schools

Recently, WFDA visited **Hillyfield, Davis Lane, Ainslee Wood, Winns and Buckhurst Hill Community** Primary Schools and screened pupils.

Also, **Chase Lane** Primary School has appointed one of our tutors to work with some of their students.

Contact **Helen Bigham\*** to discuss our services available for schools.



Norma Regnier & Helen Bigham

### Congratulations!

At the Waltham Forest Volunteer Recognition Ceremony held at the Town Hall. The **Mayor, Cllr Terry Wheeler** presented a certificate of gratitude to one of our volunteers **Norma Regnier** who was accompanied by our Charity Manager **Helen Bigham**.

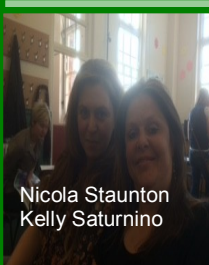


Lois Hood

### Welcome to our new Trustee Lois Hood

**Lois** is a specialist dyslexia tutor and has worked at our support classes for several years. Sadly, Lois will be leaving the classes in July but has agreed to join our Board

Of Trustees. We're sure that her wide range of dyslexia experiences and knowledge will influence Board discussions and the future direction of WFDA.



Nicola Staunton  
Kelly Saturnino

### Everyone's a winner

Volunteers, **Nicola Staunton** and **Kelly Saturnino** ran an Easter Tombola & cake stall at our Monday classes.

Everyone won a prize and

**£209** was raised. Thank you to everyone that contributed and bought tickets- it was a real team effort. Keep coming up with new fundraising ideas!



## Classes General Information



### Parent Evening Monday 22 June

Parents/carers please book a time to speak to your child's tutor and discuss how your child is progressing. If you're not able to attend please make an alternative time with the tutor. We need to hear from you as your input can influence the tutor's decision on if your child will be returning to classes in September. **This is your chance to let us know how we're doing.**

Please complete the evaluation form. This is used to help shape our funding reports. We use your feedback to provide a rich picture on what we're achieving at classes. Please complete and return the forms to either your child's tutor or **Sheena** by **Monday 22 June** latest.

### Dates for your Diary!

#### Summer Term 2015

Monday 1 June - Monday 6 July

*Class Parent evening 22 June*

*Class Award Ceremony Friday 3 July*

*Summer Transition Club 27-31 July*

#### Autumn Term 2015

Monday 14 September-Monday 19 October

No class Monday 26 October (H/T)

Monday 2 November-Monday 7 December



### Class of 2015 Award Ceremony

**Friday 3rd July;  
7.30pm-10.00pm  
West Essex Sports  
Club, Hickman Ave  
E4 9JG. Over 17's  
£5/Under 17 free.**

Bring your family and friends. Tickets can be bought in advance at classes from **Sheena**. Please bring a plate of food for the buffet and buy refreshments at the bar. Great raffle, donated prizes always appreciated!

It's always a fun celebration with a Bucking Bronco, Sumo Outfits and bouncy castle which **A-I-Entertainment** are providing at a generously discounted price!

Again this year, the Leader of Waltham Forest Council, **Cllr Chris Robbins** will be presenting the awards and has donated **£10 Amazon vouchers** to every one of our students! Also we'll be announcing our **Jack Petchey Foundation** Summer 2015 winner.



Recently, **Helen Bigham**, WFDA Charity Manager received the **Jack Petchey Leader Award**. This means WFDA is eligible to apply for a **£750** small grant. Let Helen know your ideas on how the money should be spent. Maybe kayaking or paint balling?

**Class details:** Small, individualised literacy, numeracy, handwriting and touch- typing classes held on Monday evenings (term time only) at Walthamstow School for Girls, Church Hill, E17 9RZ.

**Literacy/Numeracy/Handwriting:** 50 minute class from 4.00pm onwards (£14.00 per class) **Touch typing:** 50 minute class at 5.00pm or 6.00pm (£6.00 per class).

Remember to let us know ASAP if your child is unable to attend their class. Contact your child's tutor or Sheena, Class Co-ordinator: Office hours: Monday/Tues./Thurs. (term time) 10.00– 3.00pm, 07852 232509 or e-mail [Sheena.wfda@gmail.com](mailto:Sheena.wfda@gmail.com).